



**Our Portfolio**

At Corebridge Real Estate Investors, our goal is to create value through targeted identification and focused execution across each property market and sector in which we invest. Whether building best-in-class apartment buildings while controlling risk through disciplined risk management and in-house construction management, or repositioning capital-starved and undermanaged assets purchased below replacement cost, our team of professionals seeks to leverage their expertise to generate superior investment returns.

**North America**



**MULTIFAMILY**  
**Solana Central Park**  
**Denver, CO**  
 Opportunistic development of a market-rate apartment complex located within the Central Park master planned community.



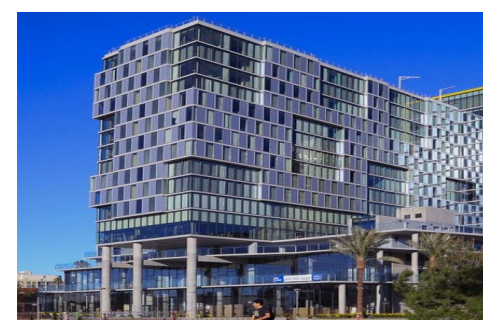
**INDUSTRIAL**  
**High Hill Rd**  
**Swedesboro, NJ**  
 Acquisition of a 107K SF single tenant industrial warehouse located in Gloucester County, NJ.



**RETAIL**  
**Beachway Plaza**  
**Bradenton, FL**  
 Value-add acquisition of a multi-anchored neighborhood shopping center with a high performing grocery tenant.



**OFFICE**  
**Sanctuary Park**  
**North Fulton, GA**  
 Value-add acquisition of an office park containing nine individual buildings, either LEED Platinum, Gold, or Silver certified.



**HOSPITALITY**  
**SpringHill Suites/Residence Inn**  
**San Diego, CA**  
 Opportunistic, mixed-use development comprised of a dual branded Marriott hotel and retail space along the waterfront.



**SENIOR HOUSING**  
**The Willows at Medway**  
**Medway, MA**  
 Opportunistic development of a senior housing facility consisting of independent living, assisted living, and memory care.

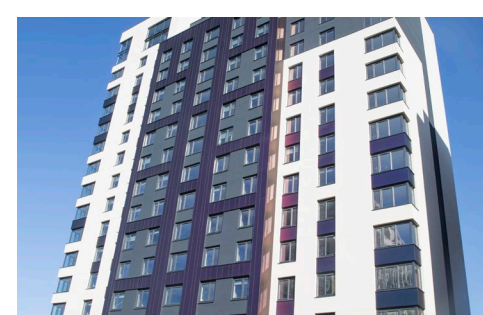
**Europe**



**MULTIFAMILY**  
**Park Square**  
**Milton Keynes, UK**  
 Opportunistic development of a residential complex centrally located within a short commuting distance to London, Oxford and Cambridge..



**INDUSTRIAL**  
**Seaham**  
**Seaham, UK**  
 Value-add acquisition of a 133K SF, Class A, distribution and warehouse facility located in the Foxcover Distribution Park.



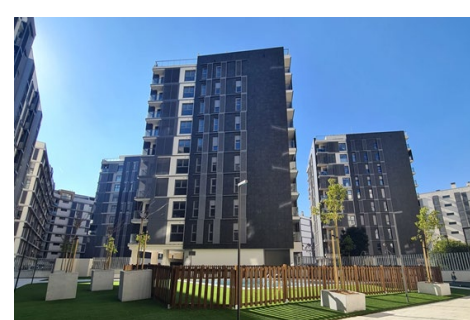
**STUDENT HOUSING**  
**Skyline**  
**Bournemouth, UK**  
 Opportunistic development of a student accommodation directly adjacent to the Bournemouth University campus.



**INDUSTRIAL**  
**Villaverde**  
**Madrid, Spain**  
 Opportunistic development of a 102K SF Class-A industrial facility located within Madrid's M45 ring road.



**INDUSTRIAL**  
**Dutch Industrial Portfolio**  
**Netherlands**  
 Value-add acquisition of a portfolio of industrial assets located in well established industrial parks throughout the Netherlands.



**MULTIFAMILY**  
**Central Q**  
**Valencia, Spain**  
 Forward purchase from a developer of a final phase 147-unit multifamily rental building in Valencia conveniently located to transport links.

Unless otherwise noted, any photographs appearing within are of investments owned or previously owned by investment vehicles managed by Corebridge Real Estate Investors and any such photographs are intended for informational and historical purposes only and no assurances are made that the firm will invest in similar assets.